

Overview of the New Public School Enrollment Process

2012

Why will this change help our students?

The current process is inefficient and creates problems for families and for schools...

A

I dropped **applications** off at **10 schools** but didn't get into any of them

B

I just moved here and don't know which **schools have available seats**

C

I got into **multiple schools**, so now I'm "**holding a seat**" at all of them

I got into **S.J. Green** and I want to get into **Esperanza**

D

I got into **Esperanza** and I want to get into **S.J. Green...too bad we can't switch!**

What are the goals of the new process?

As many students as possible **get into their top choice school**



Make the process **easier**
for families to navigate

How will the new process work?

One Application

- Parents will submit one application per child, not one to each school

One Way to Rank Schools

- Parents who want to apply to new schools will be able to list up to 8 schools in rank order

One Set of Priorities

- Siblings, students in closing schools, and students in the catchment area (K-8 only) will have a better chance of getting their top choice school

One Timeline

- Not first-come first-served. All applications will be considered at the same time

One Offer

- Students will receive one match, to their highest choice school that has available seats

Matching students to schools

1

We aim to honor family choice first and foremost...

- Families should rank the schools they want their child to attend
- We will try to match students with their top choice, or one of their top choices

2

...But some schools will have more applicants than seats

- When that happens, we will use a single set of priorities to help decide which students get those seats first:
 - a** Siblings of students who are currently enrolled in the school
 - b** Students currently enrolled in schools that are closing (and do not have a charter take-over)
 - c** Students who live in the school's geographic catchment area (*Grades K-8 only*)

Where to submit the application?

Families can **submit the application** at **multiple locations...**



At their child's school

OR

At a parent center



FAQs: Which schools are included?

Schools Included for 2012-13

All New Orleans schools in the Recovery School District

Includes both district-run and charter schools

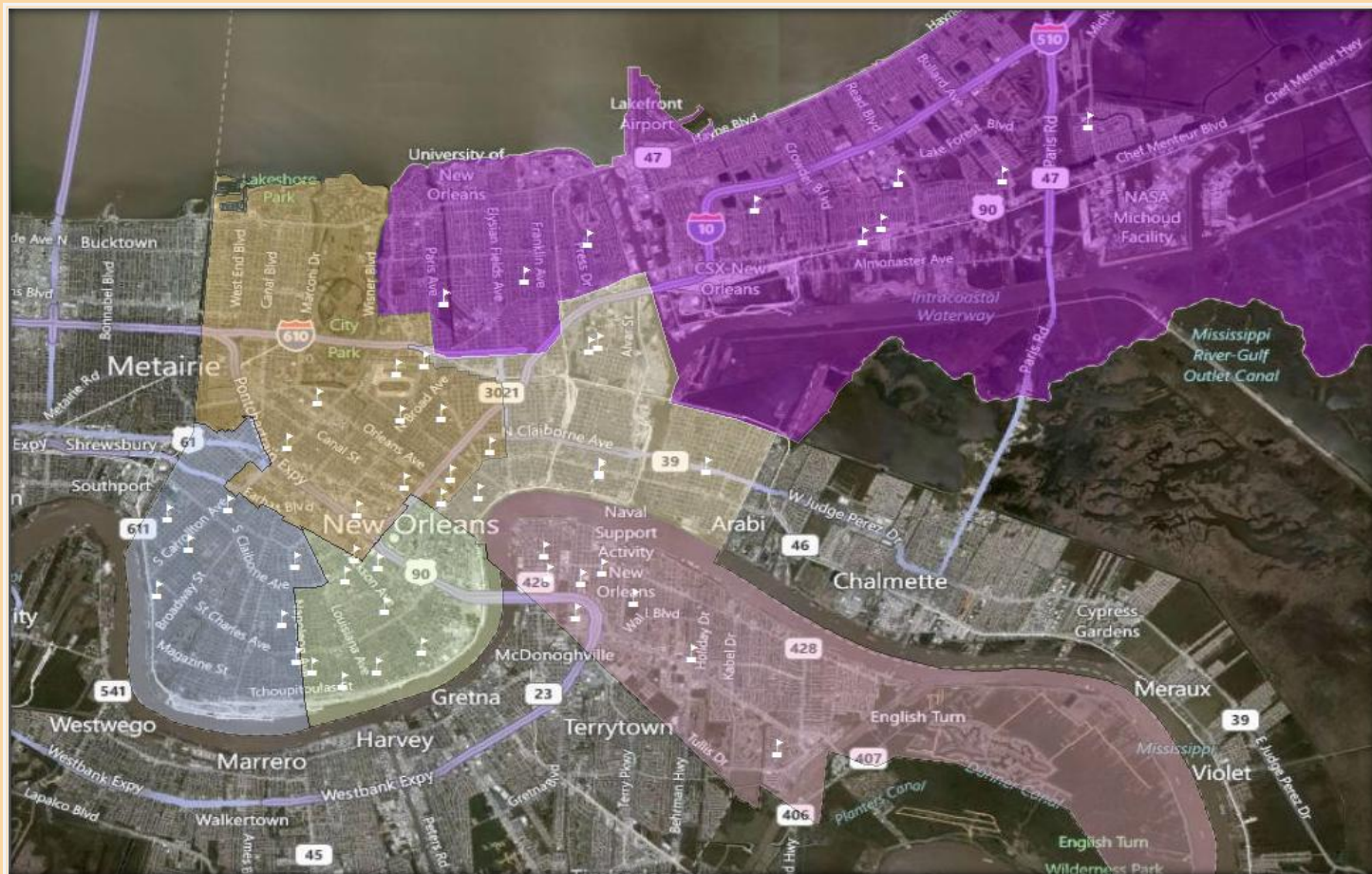
Not Included for 2012-13

Schools managed by Orleans Parish School Board (e.g., Lusher, Audubon), BESE (International School), NOCCA, private schools, parochial schools

FAQs: How does geographic priority work?

The priority kicks in if there are more applicants than seats

- Only for grades K through 8
- Only for up to 50% of the available seats in a school



FAQs: How does geographic priority work?

If Lafayette has 100 available kindergarten seats, applicants from within the catchment will have priority for 50 of those seats. If Lafayette...

... Receives 40 applicants from inside its catchment area



- All 40 of those students can be matched to the school with geographic priority

... Receives 60 applicants from inside its catchment area



- A lottery would determine which 50 students can be matched with geographic priority, the remaining 10 students will go into the lottery for the remaining 50 seats with applicants from outside the catchment

... But students residing in the catchment may prefer to apply to schools outside of the catchment



- Students are free to apply and rank any schools citywide

FAQs: What if all schools applied to are full?

No student will be without a seat at the end of the process

All students will receive a placement offer, even if they don't get a top choice

- Return to your current school
- Placed to another school in your area

Families will have the option to appeal in May

Students who did not get one of their choices will have priority for any available seats

Key dates for families to remember

Week of Feb. 6th

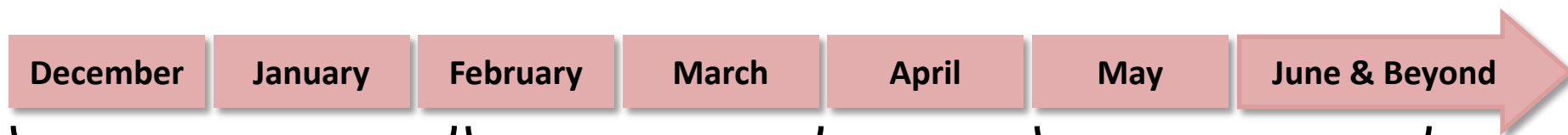
New Application
Released

March 31st

Submission
Deadline

Week of May 1st

Notifications Mailed
to Students



December

January

February

March

April

May

June & Beyond

December / January

Meetings with Parents &
Community to Discuss
Application

February / March

Workshops for
Parents to Help
Complete
Application

After May 1

Families can discuss placement offer with
staff from the school & RSD. Families can
pursue placement in different schools if
seats are available