



The **School Facilities Master Plan for Orleans Parish** is a comprehensive plan for the Orleans Parish public schools. The plan will serve as a blueprint to guide future school renovations and new construction. It is a joint project of the Recovery School District (RSD) and the Orleans Parish School Board (OPSB).

The Master Plan is a significant undertaking for our community and will require the participation of many people, including parents, students, experts, educators and other residents. The plan is scheduled to be completed in May 2008.

## DATA SNAPSHOT

Current Use: **Elementary School**

Physical Address: **4217 Orleans Avenue**

Council District: **A**

Neighborhood: **City Park**

Past Enrollment Figures (Dibert ES):

1998: **402**  
2002: **392**



## NOTES

## SITE SNAPSHOT

9.11.2005 Flood Depth: **4'**

Site Acreage: **0.89**

Number of Buildings: **1**

Construction Dates: **1921**

Former Names: **none**

Main Building Era of Construction

**Christy (design directed by staff architect E.A. Christy)**

Noteworthy Historical or Design Significance

**Near City Park**

Known Land Use History of Current Site

**Elementary School**

Preliminary Building Assessment

demolition project

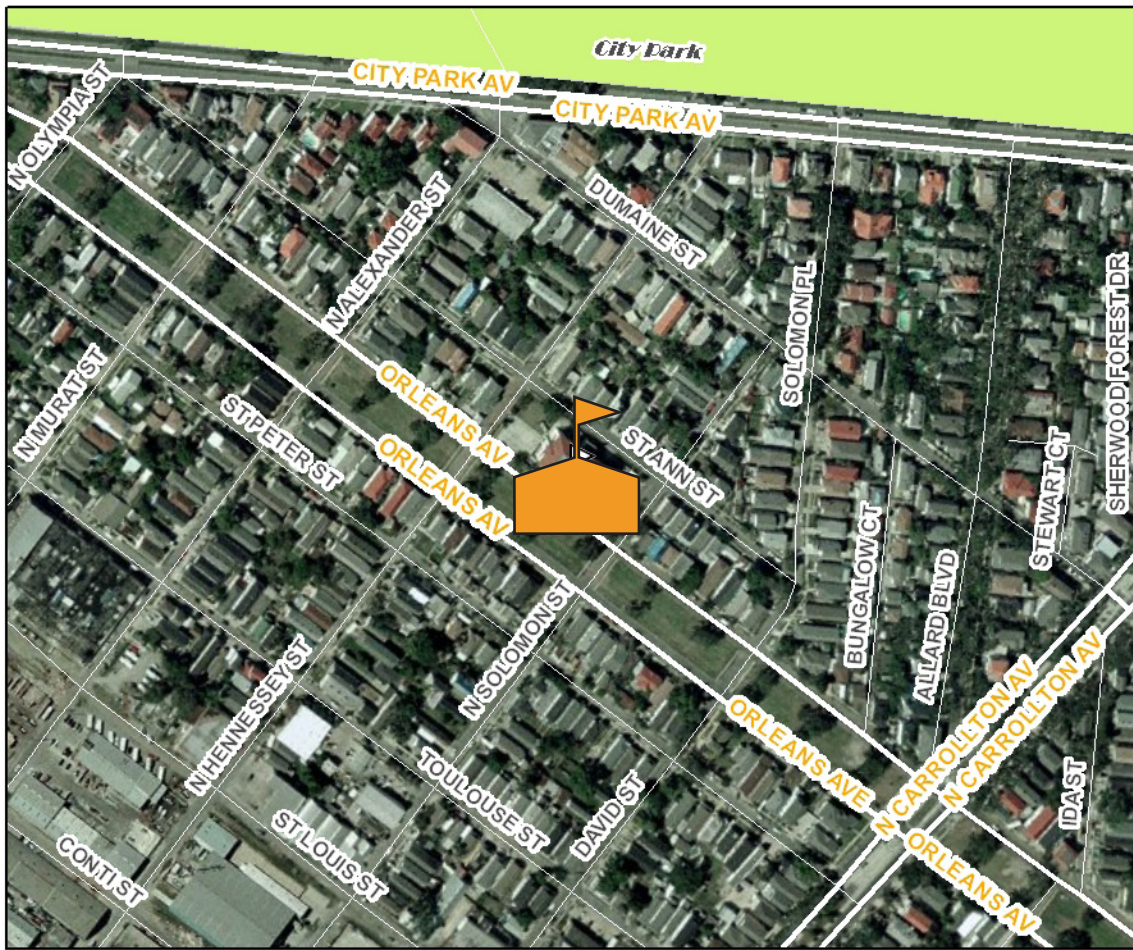
complete replacement

major renovation

**moderate renovation**

minor renovation

typical maintenance



**Legend:**

- School Site (Orange flag icon)
- Library (Blue book icon)
- Park (Green area)
- Target boundaries:
  - Re-Build (Red hatched box)
  - Re-Develop (Green hatched box)
  - Re-New (Purple hatched box)

**Scale:** 0 to 600 Feet / 0 to 150 Meters

**GIS data source:** City of New Orleans, Recovery School District, Orleans Parish School Board, New Orleans Public Library, ArcGIS/Map Service  
 Map Projection/Coordinate System: Lambert Conformal Conic; Louisiana State Plane South, feet

## SITE CONSIDERATIONS

### SITE ISSUES

- environmental/best land use
- potential for expansion
- potential for joint use
- adjacent land use/zoning/hazards
- previous planning recommendations
- flood elevations

### PROXIMITIES & ADJACENCIES

- proximity to ORM target zones
- proximity to mass transit lines
- proximity to public libraries
- proximity to public health clinics
- proximity to public parks
- redevelopment
- special districts

### CULTURAL CONSIDERATIONS

- architectural significance
- cultural significance
- regulatory issues

## CITYWIDE MEETING RESULTS

### Community Considerations

	<b>Priority to Community</b>
Size of the student pop. near the site.....	60% = high
Demographic makeup of student pop.....	50% = high
Ability for the school to serve as catalyst for future repop.....	60% = high
School is above flood elevation.....	36% = high
	36% = medium
Cultural significance of school building.....	44% = medium
	42% = high
Historic or architectural significance of school building.....	49% = high
Potential for school building expansion on site.....	62% = high
Potential for expanding schools into new sites.....	55% = high
Availability for open space at or near school site.....	66% = high
Availability of athletic fields at or near school site.....	66% = high
Availability of large performance venue at/near school site.....	50% = high
School is within walking dist. of the neighborhood it serves.....	67% = high
School is near public transportation.....	67% = high
School is near libraries, health clinics or other comm. services...	66% = high

### Community Vision for Master Plan

Community use of school after hours and on weekends.....	very important (84%)
Maximum walking distance to elementary school.....	1/2 mile (84%)
Maximum walking distance to high school.....	1 mile (42.2%)
School construction with unlimited funds.....	new facility (44.5%) cost effective (34.4%) community use (33%)
Alternative school property uses.....	